



Emergency Medicine Society of South Africa

**PRACTICE GUIDELINE
EM003**

MAJOR INCIDENT MANAGEMENT SYSTEM
Priorities, communications and triage

This Practice Guideline details the recommended triage tools for major incidents (primary – triage sieve – and secondary – triage sort). In addition, this paper details the recommended format for communications in major incidents, and for major incident management priorities.

As an aide memoir, the phoentic alphabet is spelled out in this paper.

Excluding the cover page, this Practice Guideline is **6** pages.

Date of publication:	August 2008
Date of review:	July 2010
Responsible committee member:	Prof Lee A Wallis

EMSSA Practice Guidelines provide advice on recommended practice for emergency centres, emergency personnel and emergency care activities.

The information within these papers statements is advice only. EMSSA will not be held liable for clinical outcomes related to these Guidelines.

METHANE report

M My call-sign, or name and appointment

Major incident STANDBY or DECLARED

E Exact location

- grid reference, or GPS where available

T Type of incident

H Hazards, present and potential

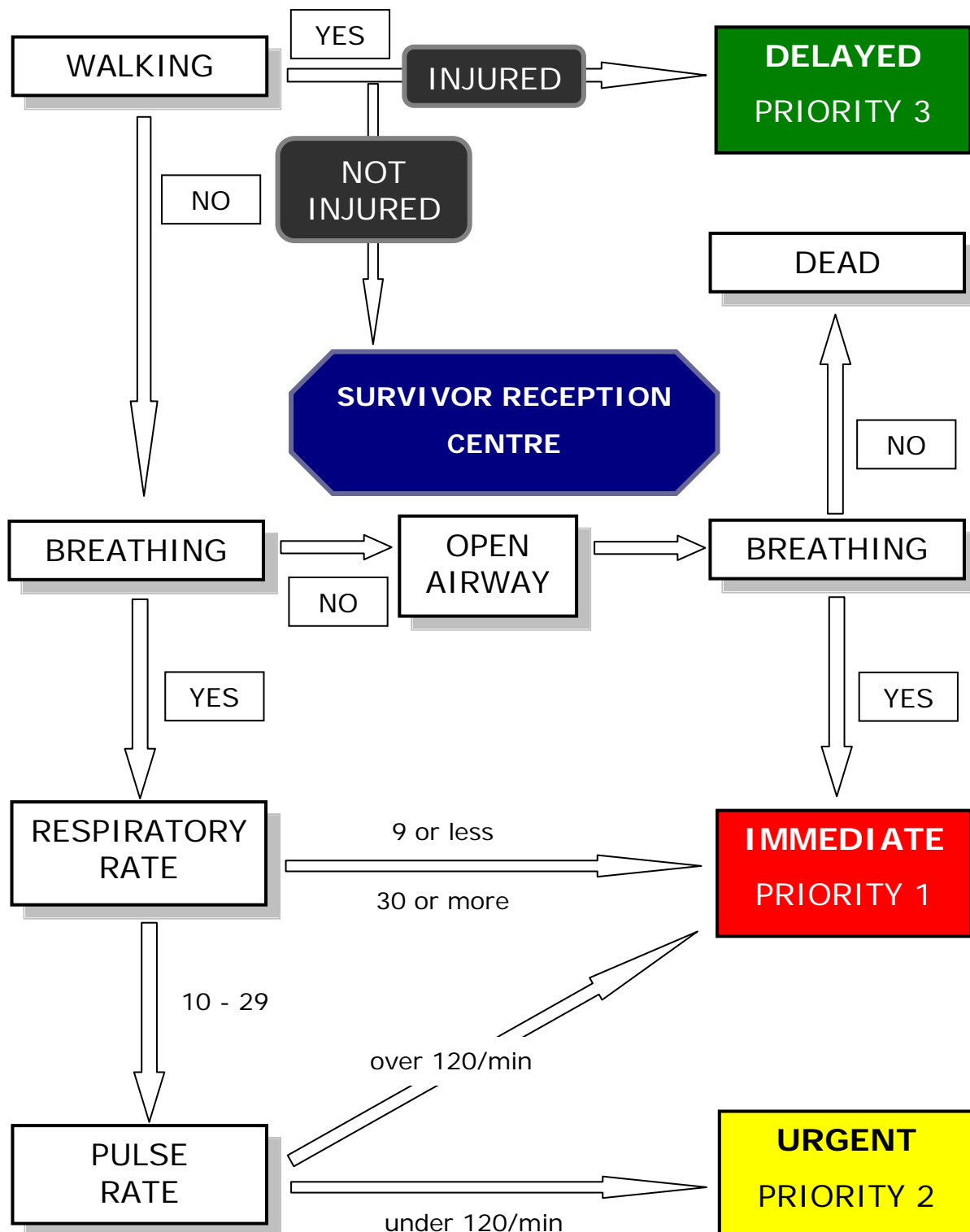
A Access to scene, and egress route

- helicopter landing site location

N Number and severity of casualties

E Emergency services present and required

Triage Sieve



Capillary refill test (CRT) is an alternative to pulse rate, but is unreliable in the cold or dark: if it is used, a CRT of > 2 seconds indicates **PRIORITY 1**

Triage Sort

STEP 1: Calculate the GLASGOW COMA SCORE (GCS)

A Eye opening:	B Verbal response:	C Motor response:
Spontaneous 4	Orientated 5	Obeys commands 6
To voice 3	Confused 4	Localises 5
To pain 2	Inappropriate 3	Pain withdraws 4
None 1	Incomprehensible 2	Pain flexes 3
	No response 1	Pain extends 2
		No response 1

$$\text{GCS} = \text{A} + \text{B} + \text{C}$$

STEP 2: Calculate the TRIAGE SORT SCORE

X GCS	Y Respiratory rate	Z Systolic BP
13 – 15 4	10 – 29 4	≥ 90 4
9 – 12 3	≥ 30 3	76 – 89 3
6 – 8 2	6 – 9 2	50 – 75 2
4 – 5 1	1 – 5 1	1 – 49 1
3 0	0 0	0 0

$$\text{TRIAGE SORT SCORE} = \text{X} + \text{Y} + \text{Z}$$

STEP 3: Assign a triage PRIORITY

12 = PRIORITY 3
11 = PRIORITY 2
≤10 = PRIORITY 1

STEP 4: Upgrade PRIORITY at discretion of senior clinician, dependent on the anatomical injury/working diagnosis

Phonetic Alphabet

Alpha

Juliet

Sierra

Bravo

Kilo

Tango

Charlie

Lima

Uniform

Delta

Mike

victor

Echo

November

Whiskey

Foxtrot

Oscar

X-ray

Golf

Papa

Yankee

Hotel

Quebec

Zulu

India

Romeo



Command and Control

Safety

Communication

Assessment

Triage

Treatment

Transport